

## SmartSystems™ Foundation



- Remote Services Delivery for Intermec devices & peripherals
- Integrates with industry leading device and system management solutions
- Console provides easy, stand-alone operation
- Centralized Administration
- Monitor Data Collection Equipment

### SmartSystems™ Foundation

SmartSystems Foundation is a software platform that provides a single, integrated environment for hands-free deployment and management of devices located anywhere in the enterprise – on-site or remote. Foundation works with the Intermec components of your system including mobile computers, RFID readers, printers and bar code scanners, to make the most of limited IT resources, and lower your total cost of ownership for data collection equipment.

#### Take Full Advantage of Intermec Devices

Intermec devices are packed with powerful features. Capabilities such as wireless communications, built-in 802.1x security, Windows Mobile, Bluetooth and full data collection support are available when you take a device out of the box. Foundation lets you view and configure all of the settings contained in a device from one convenient location for quick set-up, and provides easy access to the wide range of features integrated into Intermec equipment.

#### Simplify Administration

An intuitive administrator's console provides centralized access to remote devices. Administrators can change device settings, send OS upgrades, update software applications, and execute other changes directly from the console to save time and significantly cut costs. SmartSystems-enabled devices appear on the console, providing real-time visibility to device status and information.

#### Reduce Support and Minimize Equipment Downtime

SmartSystems Foundation makes it easy to customize, upgrade and optimize your system by slashing time and expense associated with making changes and supporting devices. System administrators can adjust settings at their desktop and push them to devices in the field without ever handling the equipment. Create and save a golden configuration image, then use the image to restore device settings and solve field issues, or quickly load, configure and deploy a replacement device.

## Extend Capabilities with Industry Leading Device Management Solutions

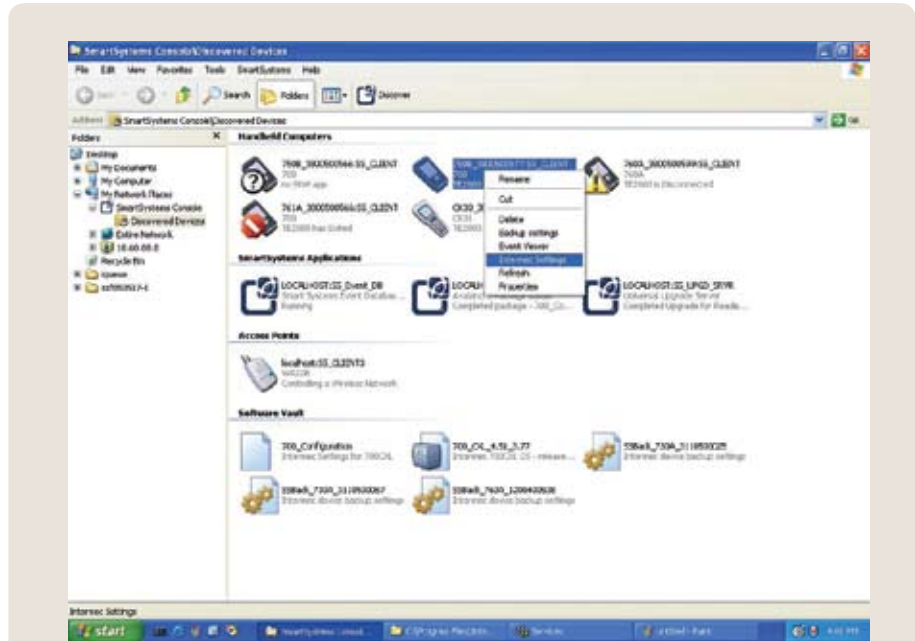
SmartSystems Foundation integrates with industry leading device management solutions such as Wavelink Avalanche. This enables you to take advantage of additional management features including automated software distribution to alleviate the repetitive process of distributing updates, and remote device control to diagnose user issues. You have the option of managing your Intermec devices from the same console that you use to manage other devices in your enterprise, yet you get full visibility and access to the unique device features and settings that led VDC to name Intermec the worldwide leader for rugged PDAs.

### System Requirements

SmartSystems Foundation is installed on a PC running Windows XP Professional or Windows Server 2003. SmartSystems-enabled products from Intermec, such as the popular 700 series mobile computers, are discovered by Foundation as soon as they are placed on the network.

### SmartSystems Enabled Products

Unlike management systems that only support a single type of device, SmartSystems Foundation provides a consistent way to manage a wide variety of Intermec products including Intermec computers, printers, RFID system components, software applications, barcode scanners and other peripheral and network devices. Many SmartSystems-enabled devices feature the Intermec Ready-to-Work Indicator, a blue LED that gives users visual confirmation that the device is on the network and functioning properly. Check with Intermec for the latest list of SmartSystems-enabled products.



### SmartSystems™ Foundation Console

- Discover devices and applications as they connect to the network
- Display connection level status and device state
- View device information including device type, device ID, and other resource information
- Configure device settings remotely
- Upgrade individual devices by dragging and dropping software or configuration settings onto device

#### North America

##### Corporate Headquarters

6001 36th Avenue West  
Everett, Washington 98203  
Phone: (425) 348-2600  
Fax: (425) 355-9551

##### South America & Mexico Headquarters Office

Newport Beach, California  
Phone: (949) 955-0785  
Fax: (949) 756-8782

#### Europe/Middle East &

##### Africa Headquarters Office

Reading, United Kingdom  
Phone: +44 118 923 0800  
Fax: +44 118 923 0801

#### Asia Pacific

Headquarters Office  
Singapore  
Phone: +65 6303 2100  
Fax: +65 6303 2199

#### Internet

www.intermec.com  
Worldwide Locations:  
www.intermec.com/locations

#### Sales

Toll Free NA: (800) 934-3163  
Toll in NA: (425) 348-2726  
Freephone ROW: 00 800 4488 8844  
Toll ROW: +44 134 435 0296

#### OEM Sales

Phone: (425) 348-2762

#### Media Sales

Phone: (513) 874-5882

#### Customer Service and Support

Toll Free NA: (800) 755-5505  
Toll in NA: (425) 356-1799

Copyright © 2007 Intermec Technologies Corporation. All rights reserved. Intermec is a registered trademark of Intermec Technologies Corporation. All other trademarks are the property of their respective owners. Printed in the U.S.A. 611673-01A 03/07



In a continuing effort to improve our products, Intermec Technologies Corporation reserves the right to change specifications and features without prior notice.